

2014



# SII Products

## MOVEMENT CATALOGUE



*Japan Movement*  
[www.timemodule.com](http://www.timemodule.com)

Exceptional chronograph functioning,  
brought to you by the SII advanced technology



All chrono hands return to zero instantly upon pushing of the button,  
accomplished by the **Three Pointed Hammer** mechanism





*Instant Zero Reset*, once a signature feature of mechanical chronographs, is now wisely applied to both our NE88 (mechanical chronograph movement) and VK series (quartz chronograph movements).



NE Mechanical Chronograph



VK Quartz Chronograph

# Premium Mechanical Series

**New** NE88



Mirror Diamond Cut on bridges

Cote de Geneve polishing on rotor



High beat vibration frequency  
28,800 vibrations per hour (4Hz) (NE88, NE20)

## True Value of Watchmaking by SII's Original Mechanical Chronograph



### Column Wheel for Chronograph Coordination

Column wheel is the most important component of coordinating the Start, Stop and Reset functions of chronograph hands. The smooth and super-soft click start prevents excessive force from being exerted on the other components, resulting in excellent durability. Advanced manufacturing technology is necessary to produce this highly precise column wheel, making it the symbol of high-end watchmaking.



### Vertical Clutch for Power Transmission

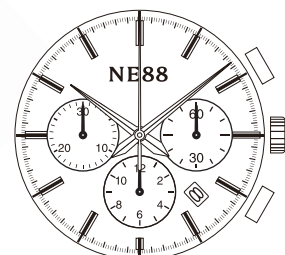
Vertical clutch is a tiny device with a pinion running through the centre. When the pinion turns at the start of the chronograph, no gears are moved and the wheel teeth are always meshed together. It thus eliminates the "jumping hand" problem commonly found in other mechanical chronograph watches. Precision level of time measurement and durability of the components are enhanced. Vertical clutch has received much attention, and has been adopted in many luxury watch brands in recent years.

## NE88 Mechanical Chronograph **New**

12 1/2'''

### NE88

- Height : 7.62mm
- 2 hands / small second
- Quick changing date
- Centre chrono second
- Chrono minute / hour
- Duration time : more than 45 hours
- 28,800 vibrations per hour (4Hz)
- Stop second device
- 34 jewels



# NE15 & NE20

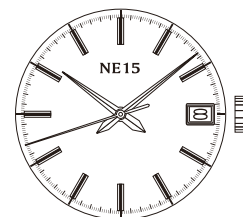
- Fine polishing
- Higher time accuracy
- Duration time over 50 hours (NE15)
- Multi-eye with power reserve indicator (NE20)
- High beat vibration frequency  
28,800 vibrations per hour (4Hz) (NE20)



12'''

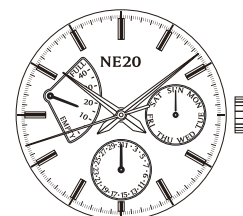
### NE15

Height: 5.32mm  
 3 hands / date  
 Duration time: more than 50 hours  
 Automatic winding with ball bearing / Manual winding  
 21,600 vibrations per hour (3Hz)  
 Stop second device  
 Quick date correction  
 24 jewels



### NE20

Height: 6.15mm  
 3 hands / day / date / power reserve  
 Duration time: more than 45 hours  
 Automatic winding with ball bearing / Manual winding  
 28,800 vibrations per hour (4Hz)  
 Stop second device  
 Quick day & date correction  
 29 jewels



## Total quality control



Movement designing



Assembling in clean room



Inspection



# Basic Mechanical Series



## NH3 Series High quality features



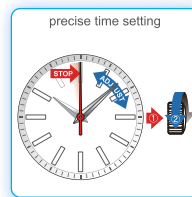
Edge cutting



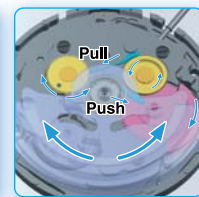
Gold plating (NH38/39)



Mirror finishing



Stop second device



Efficient winding with  
" Magic Lever "

## NH3 Series

12<sup>'''</sup>

### NH35

Height: 5.32mm  
3 hands / date  
Automatic winding with ball bearing  
/ **Manual winding**  
21,600 vibrations per hour (3Hz)  
**Stop second device**  
Quick date correction  
24 jewels



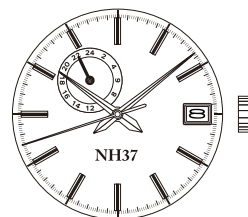
### NH36

Height: 5.32mm  
3 hands / day-date  
Automatic winding with ball bearing  
/ **Manual winding**  
21,600 vibrations per hour (3Hz)  
**Stop second device**  
Quick day & date correction  
24 jewels



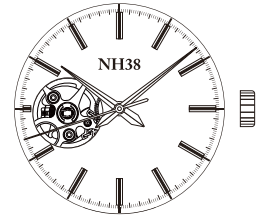
### NH37

Height: 5.32mm  
3 hands / date / 24 hour  
Automatic winding with ball bearing  
/ **Manual winding**  
21,600 vibrations per hour (3Hz)  
**Stop second device**  
Quick date correction  
24 jewels



### NH38

Height: 5.32mm  
3 hands  
Automatic winding with ball bearing  
/ **Manual winding**  
21,600 vibrations per hour (3Hz)  
**Stop second device**  
24 jewels



### NH39

Height: 5.32mm  
3 hands / 24 hour  
Automatic winding with ball bearing  
/ **Manual winding**  
21,600 vibrations per hour (3Hz)  
**Stop second device**  
24 jewels



NH37



NH38

# NH0 & NH1 Series

7 3/4'''

## NH05

Height: 5.92mm  
3 hands / date  
Automatic winding with ball bearing  
/ Manual winding  
21,600 vibrations per hour (3Hz)  
Quick date correction  
21 jewels



## NH06

Height: 5.92mm  
3 hands / day-date  
Automatic winding with ball bearing  
/ Manual winding  
21,600 vibrations per hour (3Hz)  
Quick day & date correction  
21 jewels



10 1/2'''

## NH15

Height: 6.01mm  
3 hands / date  
Automatic winding with ball bearing  
/ Manual winding  
21,600 vibrations per hour (3Hz)  
Quick date correction  
21 jewels



## NH16

Height: 6.01mm  
3 hands / day-date  
Automatic winding with ball bearing  
/ Manual winding  
21,600 vibrations per hour (3Hz)  
Quick day & date correction  
21 jewels



## 3 sizes available



NH0 Series  
7 3/4'''

NH1 Series  
10 1/2'''

NH3 Series  
12'''

# Premium Chronograph Series



**New** VK68

## Quartz Chronograph Mechanical Action



**Instant Zero Reset of Chrono Hands**



**Centre 1/5 Chrono Second**

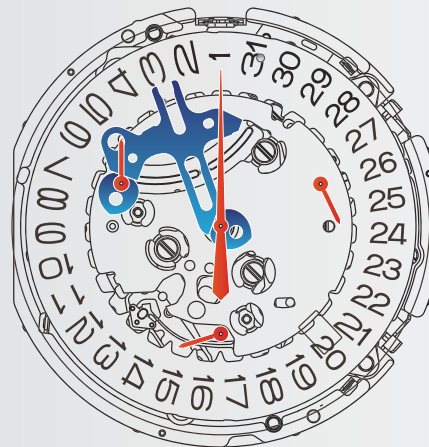


**Click Feeling Push Buttons**

## Three Pointed Hammer (Instant zero reset function)



Three pointed hammer has once been exclusive to SII mechanical chronographs. VK premium chronograph series (quartz movements) inherit the technology, setting newly high standard for true chronographs.

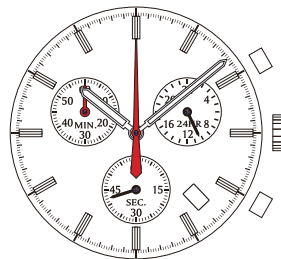




# VK Series

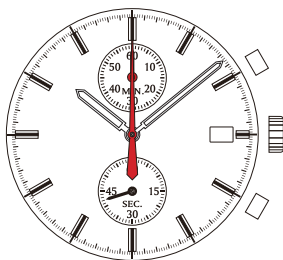
## VK68 New

Height : 5.10mm  
 2 hands / date / small second  
 Centre 1/5 chrono second  
 Chrono minute  
 24 hour  
 BL : 3 years (SR936SW)



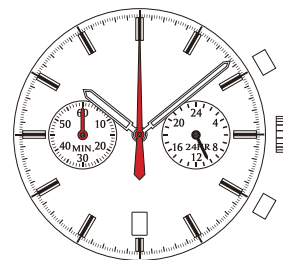
## VK61

Height : 5.10mm  
 2 hands / date / small second  
 Centre 1/5 chrono second  
 Chrono minute  
 BL : 3 years (SR936SW)



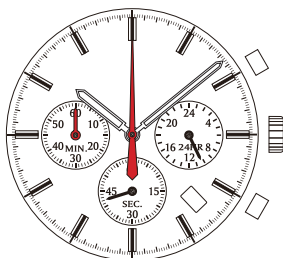
## VK64

Height : 5.10mm  
 2 hands / date  
 Centre 1/5 chrono second  
 Chrono minute  
 24 hour  
 BL : 3 years (SR936SW)



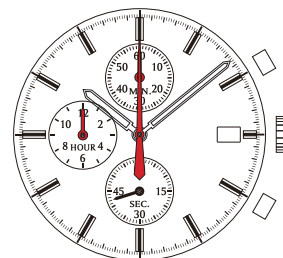
## VK63

Height : 5.10mm  
 2 hands / date / small second  
 Centre 1/5 chrono second  
 Chrono minute  
 24 hour  
 BL : 3 years (SR936SW)



## VK67

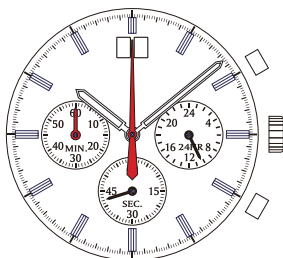
Height : 5.10mm  
 2 hands / date / small second  
 Centre 1/5 chrono second  
 Chrono minute / hour  
 BL : 3 years (SR936SW)



## VK73

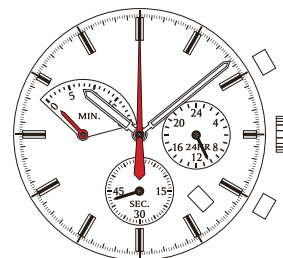
Height : 5.90mm  
 2 hands / big calendar  
 Small second  
 Centre 1/5 chrono second  
 Chrono minute  
 24 hour  
 BL : 3 years (SR936SW)

**BIG Calendar**



## VK83

Height : 5.10mm  
 2 hands / date  
 Small second  
 Centre 1/5 chrono second  
 Retrograde chrono 20 minute  
 24 hour  
 BL : 3 years (SR936SW)



VK73



VK83

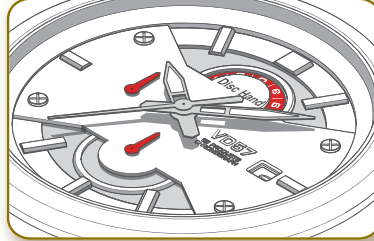
Premium Chronograph

# Basic Chronograph Series

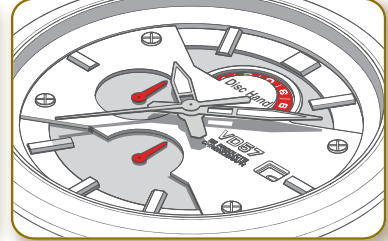


*Super high hand for layered dial and disc hand* **New**

VD57 Special chrono 1/10 second hand : Disc hand applicable!

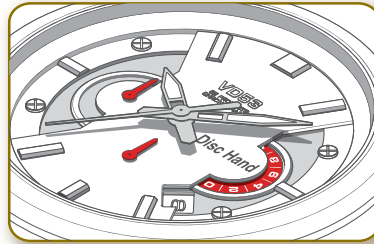


Type LLA

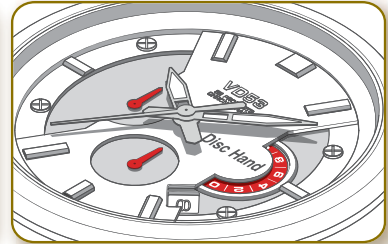


Type LLB

VD53 Special 24 hour indicator : Disc hand applicable!



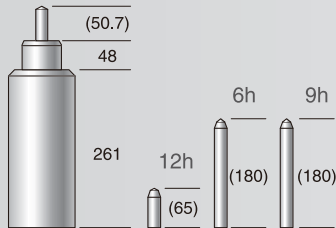
Type LLA



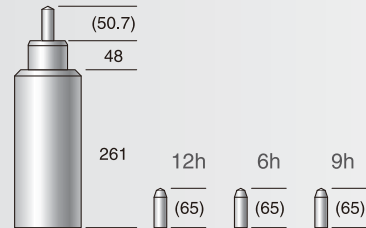
Type LLB

## Super high hand

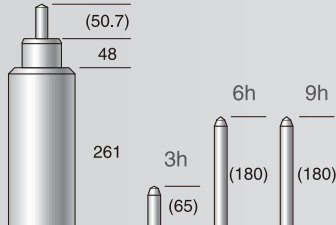
VD57 (Type LLA)



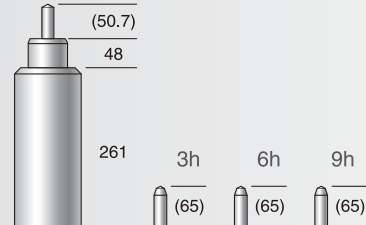
VD57 (Type LLB)



VD53 (Type LLA)



VD53 (Type LLB)



\*Dimensions in ( ) are for reference only.

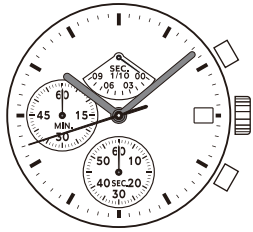
To search for more variations of SII Movements, go to <http://www.timemodule.com/sii/eng/index.php>

**Search**

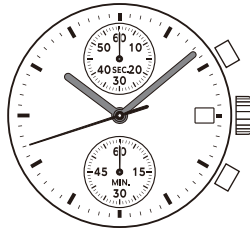
# VD5 Series

12 3/4'''

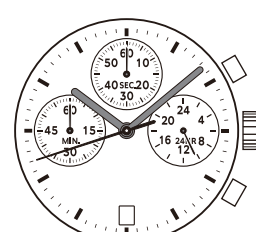
**VD50** **HL** **60 min** **1/10 sec**  
 Height: 4.57mm  
 3 hands / date /  
 Chrono second / minute  
 Retrograde chrono 1/10 second  
 BL: 2 years (SR920SW)



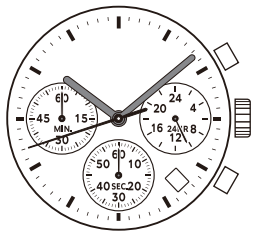
**VD51** **HL** **60 min**  
 Height: 4.57mm  
 3 hands / date /  
 Chrono second / minute  
 BL: 2 years (SR920SW)



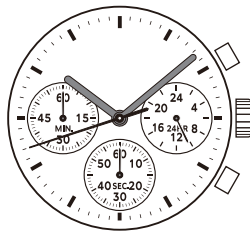
**VD52** **HL** **60 min**  
 Height: 4.57mm  
 3 hands / date /  
 Chrono second / minute, 24 hour  
 BL: 2 years (SR920SW)



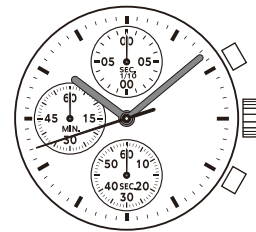
**VD53** **HL** **60 min** **Super high hand**  
 Height: 4.57mm  
 3 hands / date /  
 Chrono second / minute, 24 hour  
 BL: 2 years (SR920SW)



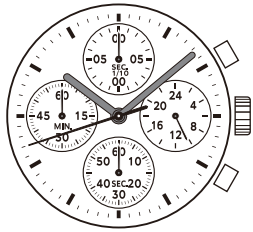
**VD54** **H** **60 min**  
 Height: 3.97mm  
 3 hands /  
 Chrono second / minute, 24 hour  
 BL: 2 years (SR920SW)



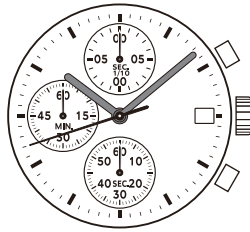
**VD55** **H** **60 min** **1/10 sec**  
 Height: 3.97mm  
 3 hands / chrono second / minute  
 1/10 second  
 BL: 2 years (SR920SW)



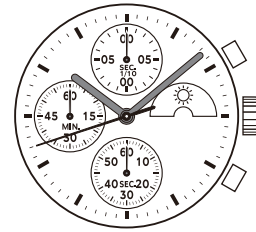
**VD56** **H** **60 min** **1/10 sec**  
 Height: 3.97mm  
 3 hands /  
 Chrono second / minute / 1/10 second  
 24 hour  
 BL: 2 years (SR920SW)



**VD57** **HL** **60 min** **1/10 sec** **Super high hand**  
 Height: 4.57mm  
 3 hands / date /  
 Chrono second / minute / 1/10 second  
 BL: 2 years (SR920SW)



**VD59** **HL** **60 min** **1/10 sec**  
 Height: 4.57mm  
 3 hands /  
 Chrono second / minute / 1/10 second  
 Sun & moon  
 BL: 2 years (SR920SW)



Basic Chronograph

\* Specifications are subject to change without notice. Photos are slightly different from actual products. Photo Scale = 1:1. BL = Battery Life

**H** High Hand Available **L** Long Stem Available **60 min** Measure up to 60 minutes. **1/10 sec** Measure in 1/10 second increments.



# Multi-eye & Retrograde Series

*For unlimited design possibilities*

Classic



Fashion



Modern Unique



Sports

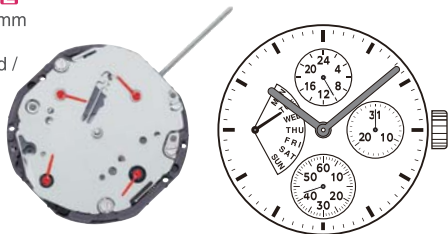


# VD8 Series

10 1/2'''

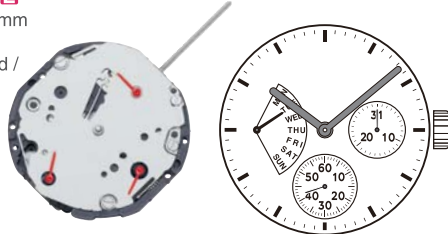
## VD84

Height: 3.45mm  
2 hands /  
Small second /  
24 hour /  
Day / date  
BL: 3 years  
(SR626SW)



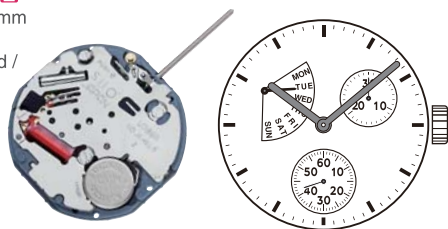
## VD85

Height: 3.45mm  
2 hands /  
Small second /  
Day / date  
BL: 3 years  
(SR626SW)



## VD86

Height: 3.45mm  
2 hands /  
Small second /  
Day / date  
BL: 3 years  
(SR626SW)



## VD87

Height: 3.45mm  
2 hands /  
Small second /  
Day / date  
BL: 3 years  
(SR626SW)



# VD7 Series

## VD72

Height: 3.45mm  
2 hands /  
Date  
BL: 3 years  
(SR626SW)



## VD73

Height: 3.45mm  
2 hands /  
Small second /  
Date  
BL: 3 years  
(SR626SW)



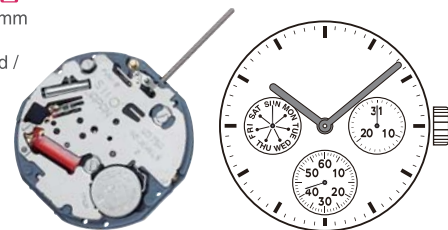
## VD74

Height: 3.45mm  
2 hands /  
Small second /  
24 hour /  
Day / date  
BL: 3 years  
(SR626SW)



## VD75

Height: 3.45mm  
2 hands /  
Small second /  
Day / date  
BL: 3 years  
(SR626SW)



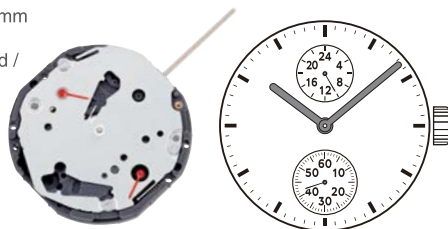
## VD76

Height: 3.45mm  
2 hands /  
Small second /  
Day / date  
BL: 3 years  
(SR626SW)



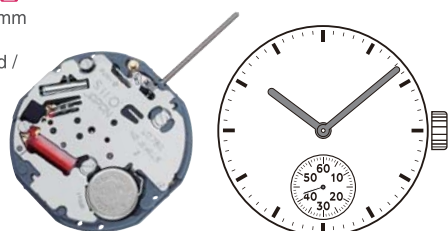
## VD77

Height: 3.45mm  
2 hands /  
Small second /  
24 hour  
BL: 3 years  
(SR626SW)



## VD78

Height: 3.45mm  
2 hands /  
Small second /  
BL: 3 years  
(SR626SW)



## VD79

Height: 3.45mm  
2 hands /  
Day / date  
BL: 3 years  
(SR626SW)



Multi-eye / Retrograde

# Slim Series

*VJ Series bring variety for every day*



Sizes from 6 3/4" x 8" to 12 1/2" ;  
calendars in different languages,  
colors, positions and shapes ;  
options with high hand and long stem.

To search for more variations of SII Movements, go to  
<http://www.timemodule.com/sii/eng/index.php>

Search



2 Hands



3 Hands

3 3/4"

**VB20**

Height: 2.38mm  
Φ15.55 x 8.45mm  
BL: 3 years (SR521SW)



4 3/4"

**VC00**  

Height: 2.38mm  
BL: 2 years (SR521SW)



**VC01**  

Height: 2.38mm  
BL: 2 years (SR521SW)



5 1/2"

**VC10**  

Height: 2.38mm  
BL: 2 years (SR521SW)



**VC11**  

Height: 2.38mm  
BL: 2 years (SR521SW)







2 Hands



3 Hands



2 Hands / Date



3 Hands / Date

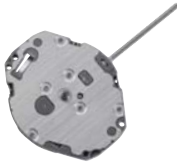


3 Hands / Day-Date

6 3/4 x 8'''

**VJ20 H**

Height: 2.28mm  
BL: 3 years (SR621SW)



**VJ21 H**

Height: 2.28mm  
BL: 3 years (SR621SW)



**VJ24 L**

Height: 2.71mm  
BL: 3 years (SR621SW)



**VJ22 HL**

Height: 2.71mm  
BL: 3 years (SR621SW)



**VJ23 HL**

Height: 2.94mm  
BL: 3 years (SR621SW)



8 3/4'''



**VJ14 L**

Height: 2.71mm  
BL: 3 years (SR621SW)



**VJ12 HL**

Height: 2.71mm  
BL: 3 years (SR621SW)



10 1/2'''

**VJ34 L**

Height: 2.71mm  
BL: 3 years (SR621SW)



**VJ32 HL**

Height: 2.71mm  
BL: 3 years (SR621SW)



**VJ33 HL**

Height: 2.94mm  
BL: 3 years (SR621SW)



3 Hands / Date



3 Hands / Day-Date



3 Hands / Wide Day-Date



3 Hands / Big Calendar

11 1/2'''

**VJ42**

Height: 2.71mm  
BL: 3 years (SR621SW)



**VJ43**

Height: 2.94mm  
BL: 3 years (SR621SW)



**VJ45**

Height: 2.94mm  
BL: 3 years (SR621SW)



**VJ76 H**

Height: 3.50mm  
BL: 3 years (SR621SW)

**BIG Calendar**



12 1/2'''

**VJ52**

Height: 2.71mm  
BL: 3 years (SR621SW)



**VJ53**

Height: 2.94mm  
BL: 3 years (SR621SW)



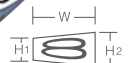
**VJ55**

Height: 2.94mm  
BL: 3 years (SR621SW)



Trapezium shape window is available for VJ42 / VJ52

<b>VJ42</b>	W = 410 H1 = 145, H2 = 225
<b>VJ52</b>	W = 450 H1 = 160, H2 = 250



\*Unit : 1/100mm

Slim

# Standard Series



2 Hands



3 Hands



3 Hands / Date



3 Hands / Day-Date



3 Hands / Sun & Moon

5 1/2'''

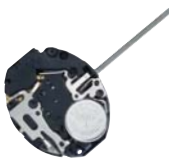
## PC10

Height: 3.15mm  
BL: 2 years (SR527SW)



## PC11

Height: 3.15mm  
BL: 2 years (SR527SW)



6 3/4 x 8'''

## PC21AE / AF

Height: 3.15mm  
BL: 2 years (SR626SW)



## PC21J

Height: 3.15mm  
BL: 3 years (SR626SW)



## PC22

Height: 4.15mm  
BL: 3 years (SR626SW)



## PC23

Height: 4.15mm  
BL: 3 years (SR626SW)



## PC29

Height: 4.15mm  
BL: 3 years (SR626SW)



10 1/2'''

## PC32

Height: 4.15mm  
BL: 3 years (SR626SW)



## PC33

Height: 4.15mm  
BL: 3 years (SR626SW)

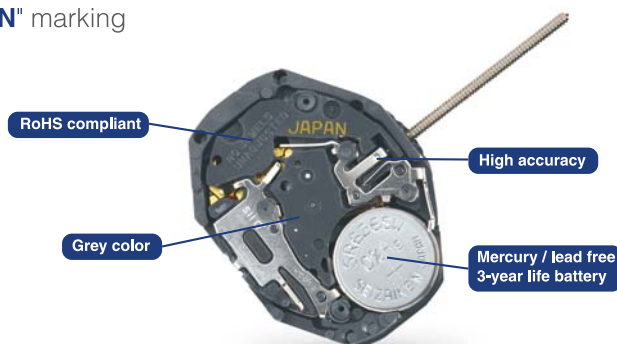


## PC39

Height: 4.15mm  
BL: 3 years (SR626SW)



Our PC21 movement with gold "JAPAN" marking indicates that it is "Made In Japan"



# All SII analogue quartz - Green products

SII Products pursues a better environment by removing the hazardous mercury and lead from all Japan movements' batteries from 2008.



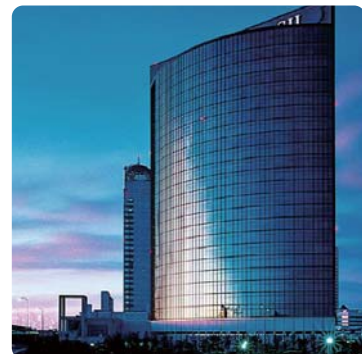
High quality to the world by SII movements



SII factory in Morioka (Japan)



FA lines of AQ movements in SII factory



SII head office (Japan)

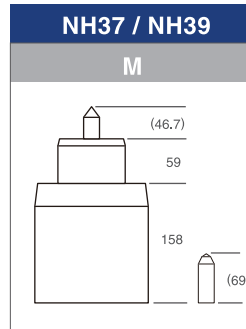
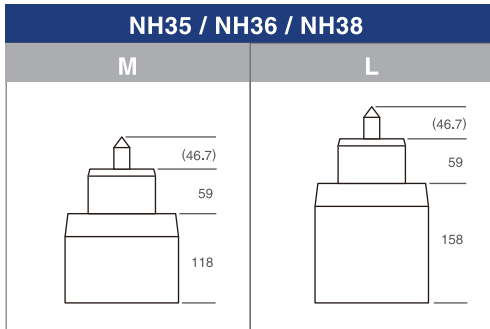


# High Hand Series

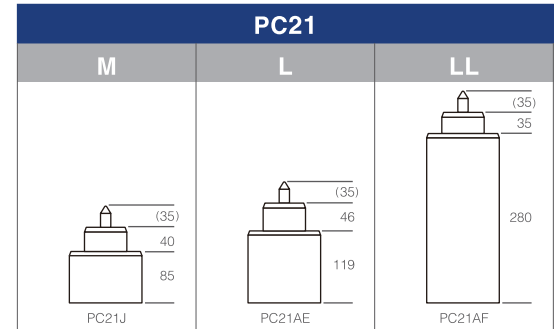
## Remark

Type M : Regular Production (Stock Item)  
 Type L / LL / LLA / LLB: Order Based Production  
 (Please contact us for more details)

## Mechanical

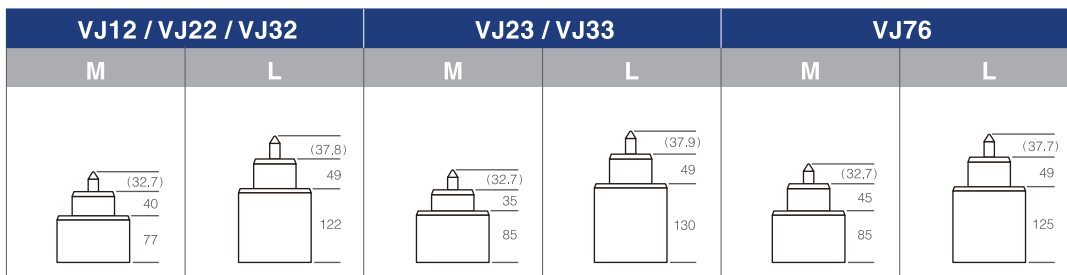
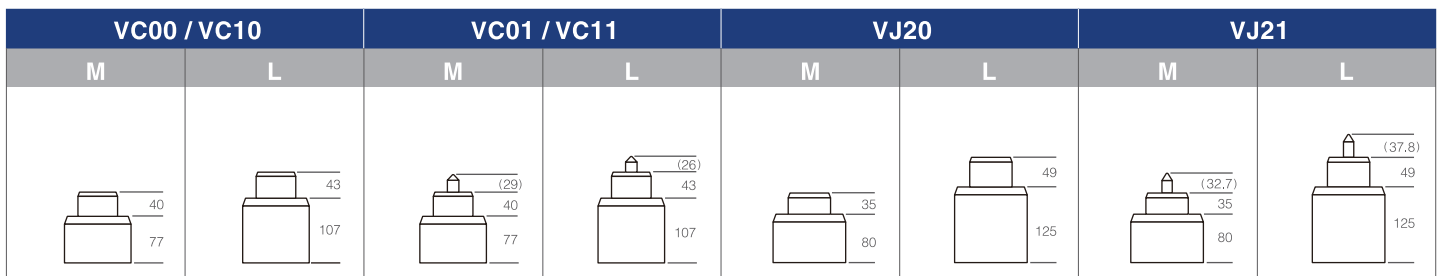


## Standard



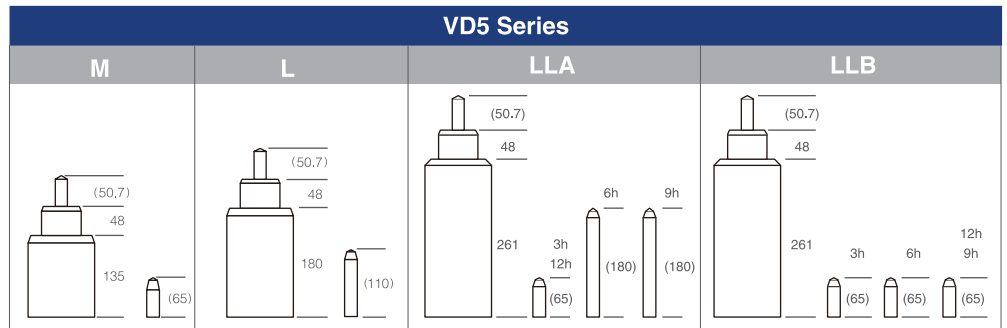
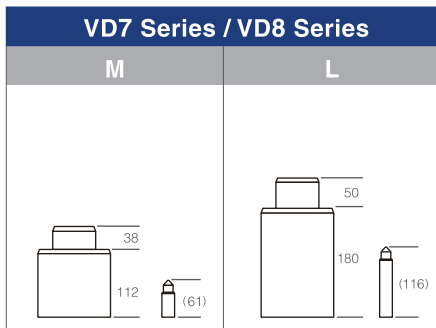
\*PC21J : 3 years battery life  
 PC21AE / AF : 2 years battery life

## Slim

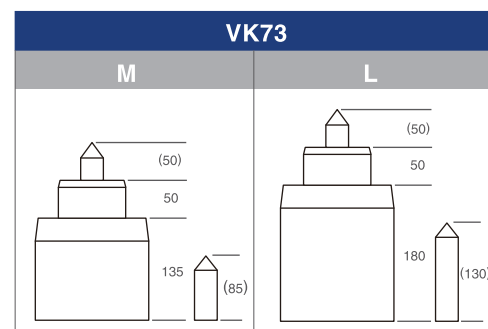
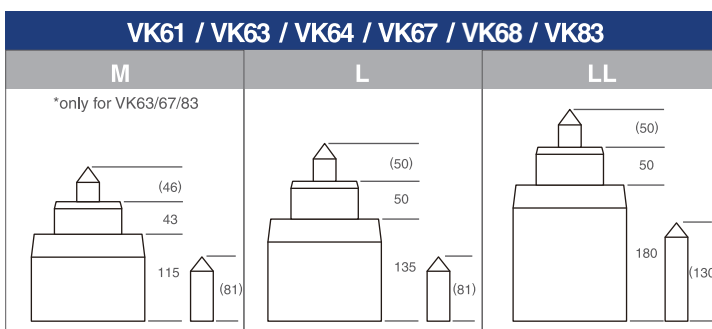


## Multi-eye / Retrograde

## Basic Chronograph



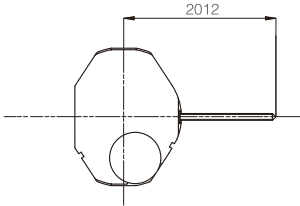
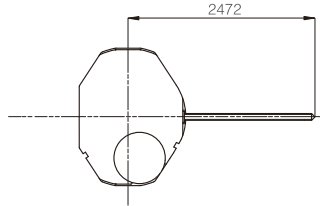
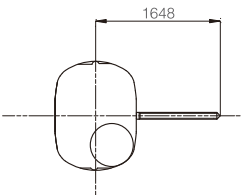
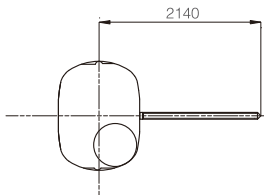
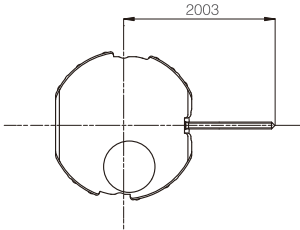
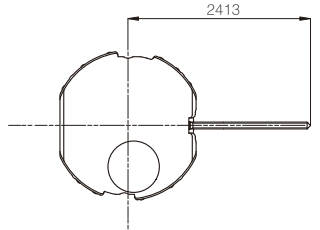
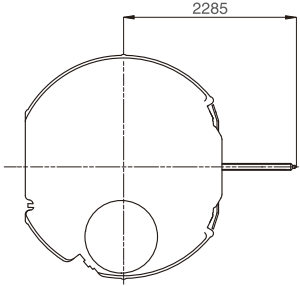
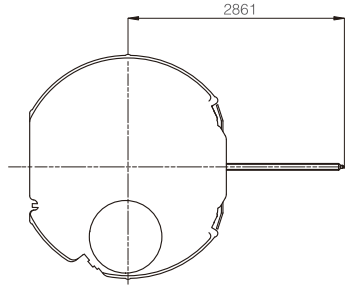
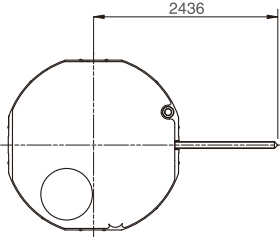
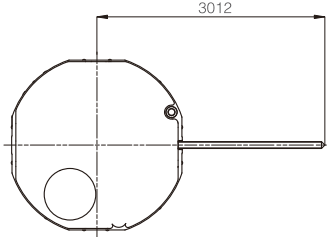
## Premium Chronograph



# Long Stem Series

## Remark

Standard Stem : Regular Production (Stock Item)  
 Long Stem : Order Based Production  
 (Please contact us for more details)

<b>PC21J</b>	<b>Standard</b>	<b>Long</b>
		
<b>VC00 / VC01 / VC10 / VC11</b>	<b>Standard</b>	<b>Long</b>
		
<b>VJ12 / VJ14 / VJ22 / VJ23 / VJ24 / VJ32 / VJ33 / VJ34</b>	<b>Standard</b>	<b>Long</b>
		
<b>VD50 / VD51 / VD52 / VD53 / VD57 / VD59</b>	<b>Standard</b>	<b>Long</b>
		
<b>VD7 Series / VD8 Series</b>	<b>Standard</b>	<b>Long</b>
		

\*Unit : 1/100mm

To search for more variations of SII Movements, go to  
<http://www.timemodule.com/sii/eng/index.php>

Search



Web Site : [www.timemodule.com](http://www.timemodule.com)  
E-mail : [sii.hkg@timemodule.com](mailto:sii.hkg@timemodule.com)



Recycle paper and soy ink are used.

All of our WATCH MOVEMENTS are manufactured to the high standard of reliability stipulated by **ISO 9000/14000 SERIES**

## SII Products Sales Division

---

**TIME MODULE (H.K.) LTD.**  
Room 2501, Metroplaza Tower 2  
223 Hing Fong Road,  
Kwai Fong, N.T., Hong Kong  
Telephone: (852) 2429-7979  
Facsimile: (852) 2420-6992  
E-mail : [sii.hkg@timemodule.com](mailto:sii.hkg@timemodule.com)

**TIME MODULE (H.K.) LTD.**  
Shenzhen Representative Office  
Room 3801, 38/F, SEG Plaza  
Huaqiang North Road, Shenzhen  
Guangdong, 518031 China  
Telephone: (86)755-8368-4980  
Facsimile: (86)755-8368-4976  
E-mail : [sii.chi@timemodule.com](mailto:sii.chi@timemodule.com)

**TIME MODULE (H.K.) LTD.**  
India Liaison Office  
Room 309, 3/F, S-MALL, M.G. Road,  
Ghatkopar West,  
Mumbai - 400 086  
India  
Telephone: (91) 22-2515-5285  
Facsimile: (91) 22-2515-5284  
E-mail : [tmsiiproduct@vsnl.net](mailto:tmsiiproduct@vsnl.net)